







 Switch to
inkjet printing



Contents

From small business to large enterprise use, Epson offers a wide range of inkjet printers that can help save money, time and unnecessary hassle. From mono to colour and A4 to A3+, you are sure to find your perfect printer.

	Page		Page
The inkjet advantage	3	 WorkForce Pro A4 RIPS	14
The green choice	4	WF-C529R	
Business as usual in the new normal	5	WF-C579R	
High quality, low cost inks	6-7	 WorkForce Pro A4 colour	15
Business imaging solutions	8-9	WF-C5290	
		WF-C5790	
 WorkForce Enterprise	10-11	 WorkForce Pro A4 mono	16
WF-C20600		WF-M5299	
WF-C20750		WF-M5799	
WF-C21000			
WF-M21000			
 WorkForce Pro A3+ RIPS	13	 EcoTank A4 colour and mono	17-18
WF-C878R		L6580	
WF-C879R		M1180	
		M3180	
		Managed print and service	19
		Specifications	20-23



The inkjet advantage

Epson inkjet printers use Heat-Free Technology to deliver key advantages.

Consistent high-speed printing

Epson Heat-Free Technology requires no heat to warm up when it is switched on or awoken from sleep. This means it starts printing immediately making it up to 50% faster from ready compared to laser printers¹, which need to preheat the fuser to print. Consistent high-speed printing is ensured, even for documents with high-printing density.

Less power consumption saves energy and money

Epson Heat-Free Technology uses up to 83% less energy than laser technology² because it does not use heat to start up. As inkjets have no fuser unit to heat, this results in significantly less energy consumption.

Fewer replacement parts, lower environmental impact

Laser printers typically have more consumables and require periodic replacement of the drum, transfer belt and fuser in many cases. Epson inkjet produces up to 96% fewer used consumables than laser printers³. Thanks to Heat-Free Technology, our inkjet printers use fewer parts that need replacing than in a laser printer, and our printheads are not a consumable. This reduces the environmental burden of manufacturing and recycling the additional resources.

Less intervention increases productivity

The Heat-Free structure of Epson inkjet printers means that there are fewer parts that can fail, which reduces the amount of intervention required. As a result, Epson inkjet printers offer reliability and significantly reduced downtime.



Up to

50%

faster from ready compared to laser printers

Up to

83%

less energy and **CO₂ emissions** compared to laser printers¹

Up to

96%

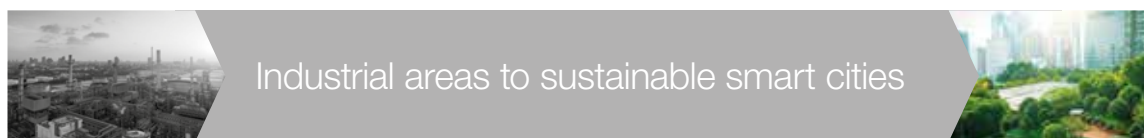
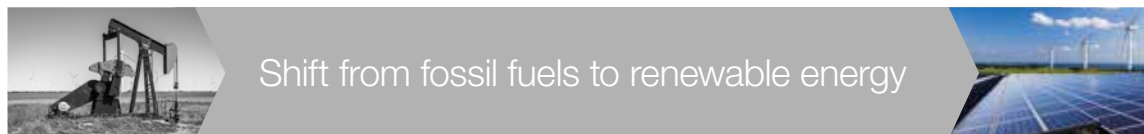
fewer used consumables than laser printers



The green choice

The world is rapidly changing. Now, more than ever, the demand for sustainability and productivity is redefining what people and businesses want from their technology, and the world around them.

Printing is no exception, and by making the switch to business inkjets, Epson customers are making positive change.



Laser printer

From old, heat-based copiers
to new Heat-Free Epson inkjets



Inkjet printer

Epson inkjet versus competitor laser consumables and packaging

This is the amount of consumables waste produced by a typical laser versus the amount of consumables required by an equivalent Epson inkjet device over 5 years⁴ (assuming 2,100 monthly print volume: 1,500 mono, 600 colour).



Business inkjet



×9
ink packs



Laser

×44
toner
cartridges



Business as usual in the new normal

Epson offers professional and affordable solutions for remote workers and enables safe social distancing in office spaces.

Flexible solutions for every space

Epson's wide range of innovative and easy-to-use multifunction printers allow users to remain productive without compromise. Enable safe social distancing in the workplace and work with ease at home.

Making the most of printer fleets

Navigating the challenges of social distancing in the office environment is made easier with Epson printer fleets. A fleet of decentralised desktop A4 printers will help create a safer workplace. Not only will this reduce touchpoints between staff, it could also improve employee productivity, with less waiting time for prints to be delivered. The management and monitoring of those devices is simplified with Epson Device Admin. Service partners benefit from Epson Remote Services to remotely analyse the potential issues, and therefore provide a faster service, maximising device uptime.

Where centralised printing zones is required in the office, Epson has simple and smart software solutions that will instantly make the workplace a safer space. Epson Print Admin and Pull Print features only allow prints to be released from print queue once the sender is physically there to retrieve them, limiting pages left in the print tray that others handle and search through.

Plus, you can set up contactless printing. Simply swipe an ID card to the release process and remove the need to touch the printer.



High quality, low cost inks

Epson's DURABrite Ultra and DURABrite Pro inks are ISO 11798 certified, producing longer lasting prints in any business environment.



Perfect prints

Enhance your printed materials with high-quality graphics. By doubling the nozzle density, the new PrecisionCore print head produces 600dpi high-quality printing on plain paper.

Business quality documents

Increased pigment concentration in DURABrite Pro Ink produces brighter colours. As the pigment sits on the surface of the paper, the prints are hardly visible on the reverse side.

More choice

As ink is directly ejected, you can print on a wide range of paper, and because the ink partially penetrates the paper fibres, the ink doesn't fade over time.

Amazingly durable

As the pigment is infused with resin and also insoluble, you can benefit from durable prints resistant to water, smudging and highlighter pens.



Why choose Epson genuine ink?

Extend the lifespan of your printer

It's a fact that genuine Epson inks optimise the lifespan of your Epson printers. That's because our inks are designed and tested to fit perfectly with your printers and prevent clogging – extending the operations of your print heads.

Non-Epson compatible inks increase your risk of downtime and repairs, cause premature wear of components and ultimately, result in permanent damage to your printer.

Enjoy more reliability and quality

When it comes to reliability, nothing comes close to genuine Epson inks. Prior to arriving with you, they undergo extensive research and development, are manufactured in high-tech, purpose-built facilities, and are vigorously tested. So they're guaranteed to produce reliable and long-lasting results.

Non-Epson compatible inks mean unacceptable print quality, poor ink longevity that can be prone to tampering when archiving documents, and damage to the professional reputation of your company.

Keep your costs to a minimum

Cost is a critical consideration when choosing your printer inks. By choosing Epson genuine inks, you're reducing potential damage on two fronts – both to your Epson printers and to the bottom line of your business.

Non-Epson compatible inks carry financial implications. Although the low upfront cost can seem appealing, the bills soon add up. From replacing faulty products to printer maintenance; wasted time and resource through reprinting, to replacing unreliable cartridges – and even your printer itself – prematurely, your budget will undoubtedly take a hit.

Visit www.epson.co.za/consumables/genuineinks



Business imaging solutions

Discover how Epson and its partner solutions take advantage of our printers to meet the needs of businesses from SMBs to large enterprises, and can be adapted to suit vertical market needs.

Fleet management



Epson Device Admin (EDA)

Control, analyse and manage your printer fleet centrally from one intuitive interface, designed to increase productivity, reduce costs and ensure maximum security.

Remote Service and Support



Epson Remote Services (ERS)

Epson's cloud-based device monitoring and management system helps your service provider to perform accurate remote diagnosis without compromising on the security. Arm service technicians with the information they need to achieve higher first fix rates and increase your device uptime.



ERS embedded agent

Benefit from the added value of ERS in combination with the embedded agent for a seamless setup and use.

Mobile and cloud printing



Mobile and Cloud printing

Turn your tablet or smartphone into a powerful office assistant. Epson's mobile and cloud printing services allow you to print and scan from your smartphone and tablet - in the office and on the go.



Workflow and security



Epson Print Admin (EPA)

Boost productivity and monitor print usage via a server-based solution that creates a secure printing, scanning and copying environment through user-authentication.



Epson Print Admin Serverless (EPA Serverless)

Seamlessly integrate devices into your security and compliance rules and regulations, without the burden of maintaining a server system.



Document Capture Pro (DCP)

Scan, save and share information easily. Advanced features for naming, separating and routing documents makes scanning simple and logical.



Document Capture Pro Server (DCPS)

For our multi-function devices, with Document Capture Pro Server 3.0 administrators can manage push scan functions without installing software on individual computers.

Third party integration



Epson Open Platform (EOP)

Gain complete control of your printing operations via a web-based application that enables you to adapt your printer to meet specific and changing business requirements with solutions that help you better manage your printing.

For more about Epson and third-party solutions please visit
www.epson.co.za/verticals/business-imaging-solutions

WorkForce Enterprise A3+

Radically fast ISO print speeds of up to 100ppm, departmental office printers that deliver the ecological benefits that only inkjet technology can offer.



WorkForce Enterprise WF-C20600 Multifunction printer

A3+ up to 4-in-1 colour with SRA3 support*
Print speeds of up to 60 ppm
Fast first copy out time (FPCOT) of 5.6 seconds⁵
Print up to 100,000 pages in mono and 50,000 pages in colour without changing supplies⁶
22.7 cm colour touch-screen
High speed DualScan
(Simplex 60 ppm / Duplex 110 ipm)
Optional second ethernet port
Low power consumption (180 W – 300 W)
2,350 sheet standard paper input
5,350 sheet max paper input
Stapling, hole punch and folded booklet option
Fax option
Postscript & PCL Printer Control Language Emulation

WorkForce Enterprise WF-C20750 Multifunction printer

A3+ up to 4-in-1 colour with SRA3 support*
Print speeds of up to 75 ppm
Fast first copy out time (FPCOT) of 5.4 seconds⁵
Print up to 100,000 pages in mono and 50,000 pages in colour without changing supplies⁶
22.7 cm colour touch-screen
High speed DualScan
(Simplex 60 ppm / Duplex 110 ipm)
Optional second ethernet port
Low power consumption (180 W – 300 W)
2,350 sheet standard paper input
5,350 sheet max paper input
Stapling, hole punch and folded booklet option
Fax option
Postscript & PCL Printer Control Language Emulation

*Fax is optional at an additional cost.



WorkForce Enterprise WF-C21000 Multifunction printer

A3+ up to 4-in-1 colour with SRA3 support*

Print speeds of up to 100 ppm

Fast first copy out time (FPCOT) of 5 seconds⁵

Print up to 100,000 pages in mono and 50,000 pages in colour without changing supplies⁶

22.7 cm colour touch-screen

High speed DualScan

(Simplex 60 ppm / Duplex 110 ipm)

Optional second ethernet/port

Low power consumption (180 W – 320 W)

2,350 sheet standard paper input

5,350 sheet max paper input

Stapling, hole punch and folded booklet option

Fax option

Postscript & PCL Printer Control Language Emulation

Solutions for WF-C20600, WF-C20750 and WF-C21000 series



Epson Print
Admin



EPA
Serverless



Epson iPrint



Epson Open
Platform



Document
Capture
Pro



Document
Capture
Pro Server



Epson Remote
Services



ERS
embedded
agent



Epson Device
Admin

WorkForce Enterprise WF-M21000 Multifunction printer

A3+ 4-in-1 mono device with SRA3 support*

Print speeds of up to 100 ppm

Fast first copy out time (FPCOT) of 4.9 seconds⁵

Print up to 120,000 pages in mono without changing supplies⁶

22.7 cm colour touch-screen

High speed DualScan

(Simplex 60 ppm / Duplex 110 ipm)

Low power consumption (170 W – 320 W)

2,350 sheet standard paper input

5,350 sheet max paper input

Stapling, hole punch and folded booklet option

Fax option

Postscript & PCL Printer Control Language Emulation



Solutions



Epson Print
Admin



Epson Print Admin
Serverless



Epson iPrint



Epson Open
Platform



Document
Capture
Pro



Document
Capture
Pro Server



Epson Remote
Services



Epson Device
Admin

WorkForce Pro A3+ RIPS

Eco-responsible, uninterrupted printing. The Replaceable Ink Pack System (RIPS) technology uses super-high yield ink supply bags so there is less need for user intervention, and fewer consumables are required.



WorkForce Pro WF-C878RD3TWFC Multifunction printer

A3+ 4-in-1 colour with SRA3 support
Print up to 20,000 in mono and colour without changing supplies⁶
Fast first out time (FPOT) of 5.5 seconds
ISO print speed of 25 ppm⁷
Flexible media handling – up to 300 gsm
12.7 cm colour touch-screen
Postscript & PCL Printer Control
Language Emulation

Solutions



Epson Print
Admin



Epson iPrint



Document
Capture
Pro



Epson Remote
Services



Epson Device
Admin



Epson Open
Platform



Document
Capture
Pro Server



ERS embedded
agent

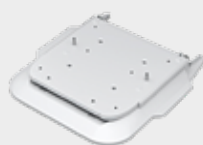
Options available for A3+ RIPS colour printers



500-sheet paper
cassette



High cabinet



Printer stand



Ethernet/Fax port options
(WF-C879R only)



Stapler
(WF-C879R only)



WorkForce Pro WF-C879RD3TWFC Multifunction printer

A3+ 4-in-1 colour with SRA3 support

Print up to 86,000 pages in mono
and 50,000 pages in colour without
changing supplies⁶

Fast first out time (FPOT) of 5.5 seconds

ISO print speed of 26 ppm⁷

Flexible media handling – up to 300 gsm

12.7 cm colour touch-screen

150 sheet ADF paper capacity

Faster and improved scanning quality

Better connectivity – up to two
Ethernet/fax port options

Scan on lighter stock – as little as 38 gsm

Postscript & PCL Printer Control
Language Emulation

Solutions



Epson Print
Admin



Epson iPrint



Document
Capture
Pro



Epson Remote
Services



Epson Device
Admin



EPA
Serverless



Epson Open
Platform



Document
Capture
Pro Server



ERS embedded
agent



WorkForce Pro A4 RIPS colour

Epson's latest A4 RIPS printers offer high ink yields, and our DURABrite Ultra and DURABrite Pro inks produce vibrant and long lasting prints.



WorkForce Pro WF-C529RDTW Single function printer

A4 colour

Print up to 50,000 pages in mono and up to 20,000 pages in colour without changing supplies⁶

ISO print speed of 24 ppm⁷

Fast first page out time of 4.8 seconds in mono / 5.3 seconds in colour⁸

Up to 1,330 sheet capacity

6.1 cm colour LCD

Postscript & PCL Printer Control
Language Emulation

Solutions



Epson Print
Admin



Epson Remote
Services



Epson Device
Admin



WorkForce Pro WF-C579RDTWF Multifunction printer

A4 4-in-1 colour

Print up to 50,000 pages in mono and up to 20,000 pages in colour without changing supplies⁶

ISO print speed of 24ppm⁷

Fast first page out time of 4.8 seconds in mono / 5.3 seconds in colour⁸

Up to 1,330 sheet capacity

Duplex scan speed of 60ipm

10.9cm colour touch-screen

Postscript & PCL Printer Control
Language Emulation

Solutions



Epson Print
Admin



Epson Remote
Services



Epson Device
Admin



Epson Open
Platform



Document
Capture
Pro



Document
Capture
Pro Server



Additional 500-sheet paper cassette

Available for A4 RIPS colour, A4 colour
and A4 mono printers

WorkForce Pro A4 colour printers

Enhance your A4 documents with vibrant colour, while keeping your printing costs low. Maximise efficiency and increase productivity with ISO print speeds of 24ppm⁷.



WorkForce Pro WF-C5290DW Single function printer

A4 colour printer
ISO print speed 24ppm⁷
Up to 830-sheet capacity
Automatic duplex
6cm colour LCD
Postscript & PCL Printer Control
Language Emulation

Solutions



Epson Print Admin



Epson Remote Services



Epson iPrint



Epson Device Admin



WorkForce Pro WF-C5790DWF Multifunction printer

A4 colour 4-in-1 printer
ISO print speed 24ppm⁷
Up to 830-sheet capacity
Automatic duplex
10.9cm colour touch-screen
Postscript & PCL Printer Control
Language Emulation

Solutions



Epson Print Admin



Epson Remote Services



Epson iPrint



Epson Open Platform



Document Capture Pro Server



Epson Device Admin



WorkForce Pro A4 mono

Small office and corporate users can reduce their monochrome printing costs with Epson's A4 mono printers. Offering a low total cost of ownership (TCO), these printers help to reduce your environmental impact, increase productivity and require less intervention.



WorkForce Pro WF-M5299DW Single function printer

A4 mono printer
ISO print speed 24ppm⁷
Up to 1,330-sheet capacity
Automatic duplex
6.1cm colour LCD
Postscript & PCL Printer Control
Language Emulation

Solutions



Epson Print
Admin



Epson Remote
Services



Epson iPrint



Epson Device
Admin



WorkForce Pro WF-M5799DWF Multifunction printer

A4 mono 4-in-1 printer
ISO print speed 24ppm⁷
Up to 1,330-sheet capacity
Automatic duplex
10.9cm colour touch-screen
Postscript & PCL Printer Control
Language Emulation

Solutions



Epson Print
Admin



Epson Remote
Services



Epson iPrint



Epson Open
Platform



Document
Capture
Pro



Document
Capture
Pro Server



Epson Device
Admin

Two additional 500-sheet paper cassettes

Available for A4 mono printers



EcoTank A4 colour

Fast and feature-rich, the Epson EcoTank L6580 printer delivers thousands of high quality pages without the cost and hassle of replacing ink cartridges.

EcoTank L6580 Multifunction printer

A4 colour 4-in-1 printer
ISO print speed 25ppm⁷
First page out time (FPOT) of 5.5 seconds in mono / 6 seconds in colour
Ultra-low-cost per page
10.9cm LCD colour touchscreen
Small footprint
Automatic duplex
Postscript & PCL Printer Control Language Emulation
500 sheets



Solutions



Epson Device
Admin



Epson Remote
Services



EcoTank A4 mono

Benefit from low-cost business printing with high reliability and minimal user intervention.



EcoTank M1180 **Single function printer**

A4 mono printer
ISO print speed 20ppm⁷
Initial ink yield of 11,000 pages
Small footprint
Automatic duplex
PCL Printer Control Language Emulation
251 sheets

Solutions



Epson Device
Admin



Epson Remote
Services



EcoTank M3180 **Multifunction printer**

A4 mono 4-in-1 printer
ISO print speed 20ppm⁷
Initial ink yield of 11,000 pages
Small footprint
Automatic duplex
6.1cm colour touch-screen
PCL Printer Control Language Emulation
251 sheets

Solutions



Epson Device
Admin



Epson Remote
Services

Peace of mind



Keep your business moving with CoverPlus

CoverPlus provides exceptional service and support to give our customers peace of mind. We'll help you choose the printers best suited for your needs and then provide high-quality ongoing support. CoverPlus ensures maximum up-time for your business, helping to protect your investment and allowing you to focus on your business.

- Up to five years' service and on-going support gives you added confidence in your investment
- Service delivery and repair within two working days reduces unforeseen down-time
- Visibility of total cost of ownership minimises unexpected service costs

For more information please visit
www.epson.co.za/verticals/workforce-pro-series

	WorkForce Enterprise			
Model	WF-C20600	WF-C20750	WF-C21000	WF-M21000
Functions	SRA3, multifunction up to 4-in-1 device*	SRA3, multifunction up to 4-in-1 device*	SRA3, multifunction up to 4-in-1 device*	SRA3, multifunction up to 4-in-1 device*
First page out print	5.6 sec Mono / Colour	5.4 sec Mono / Colour	5 sec Mono / Colour	6.2 sec Mono
Print speed (ISO)	60 ppm Mono / Colour	75 ppm Mono / Colour	100 ppm Mono / Colour	Up to 100 ppm Mono
Print resolution	600 x 2400 dpi	600 x 2400 dpi	600 x 2400 dpi	600 x 2400 dpi
PCL & PostScript compatible	Yes	Yes	Yes	Yes
Print from USB	Yes (PDF / TIFF / JPEG)	Yes (PDF / TIFF / JPEG)	Yes (PDF / TIFF / JPEG)	Yes (PDF / TIFF / JPEG)
Scan speed (ISO)	60 ipm Mono (simplex) 110 ipm Colour (duplex)	60 ipm Mono (simplex) 110 ipm Colour (duplex)	60 ipm Mono (simplex) 110 ipm Colour (duplex)	60 ipm Mono (simplex) 110 ipm Colour (duplex)
Scan resolution (Maximum)	600 x 600 dpi	600 x 600 dpi	600 x 600 dpi	600 x 600 dpi
Scan functions	Email, FTP, Network folders, Computer (Epson Document Capture Pro), Microsoft SharePoint® with Epson Document Capture Pro option, USB Memory Device	Email, FTP, Network folders, Computer (Epson Document Capture Pro), Microsoft SharePoint® with Epson Document Capture Pro option, USB Memory Device	Email, FTP, Network folders, Computer (Epson Document Capture Pro), Microsoft SharePoint® with Epson Document Capture Pro option, USB Memory Device	Email, FTP, Network folders, Computer (Epson Document Capture Pro), Microsoft SharePoint® with Epson Document Capture Pro, USB Memory Device
Copy speed (ISO)	60 ipm Mono / Colour	75 ipm Mono / Colour	100 ipm Mono / Colour	Up to 100 ipm Mono
Zoom ratio	25 - 400%	25 - 400%	25 - 400%	25 - 400%
Copy resolution	600 x 1200 dpi	600 x 1200 dpi	600 x 1200 dpi	Up to 600 x 1200 dpi
Fax transmission speed	Up to 33.6 Kbps	Up to 33.6 Kbps	Up to 33.6 Kbps	Up to 33.6 Kbps
Fax memory	6MB / 550 pages	6MB / 550 pages	6MB / 550 pages	6MB / 550 pages
Mobile and cloud printing	Epson iPrint, Email Print, Remote Print Driver, Scan-to-Cloud, Apple AirPrint	Epson iPrint, Email Print, Remote Print Driver, Scan-to-Cloud, Apple AirPrint	Epson iPrint, Email Print, Remote Print Driver, Scan-to-Cloud, Apple AirPrint	Epson iPrint, Email Print, Remote Print Driver, Scan-to-Cloud, Apple AirPrint
Interfaces	Wired Network (10BaseT / 100Base-TX), Wireless Network, USB (High Speed USB 2.0 / USB 3.0 / USB 1.1 Type A), Wi-Fi Direct	Wired Network (10BaseT / 100Base-TX), Wireless Network, USB (High Speed USB 2.0 / USB 3.0 / USB 1.1 Type A), Wi-Fi Direct	Wired Network (10BaseT / 100Base-TX), Wireless Network, USB (High Speed USB 2.0 / USB 3.0 / USB 1.1 Type A), Wi-Fi Direct	Wired Network (10BaseT / 100Base-TX / 1000Base-T), Wireless Network, USB (High Speed USB 2.0 / USB 3.0 / USB 1.1 Type A), Wi-Fi Direct
Plain paper size	A3, A4, Postcard, A3+, A5, A6, B4, B5, B6, C4 (Envelope), C5 (Envelope), C6 (Envelope), DL (Envelope), Executive, Letter, Legal, HLT, No. 10 (Envelope), User defined	A3, A4, Postcard, A3+, A5, A6, B4, B5, B6, C4 (Envelope), C5 (Envelope), C6 (Envelope), DL (Envelope), Executive, Letter, Legal, HLT, No. 10 (Envelope), User defined, SRA3	A3, A4, Postcard, A3+, A5, A6, B4, B5, B6, C4 (Envelope), C5 (Envelope), C6 (Envelope), DL (Envelope), Executive, Letter, Legal, HLT, No. 10 (Envelope), User defined	A3, A4, Postcard, A3+, A5, A6, B4, B5, B6, C4 (Envelope), C5 (Envelope), C6 (Envelope), DL (Envelope), Executive, Letter, Legal, HLT, No. 10 (Envelope), User defined
Paper capacity	Standard: 2,350 sheets (550 sheets per tray + 150 ADF); Max: 5,350 sheets	Standard: 2,350 sheets (550 sheets per tray + 150 ADF); Max: 5,350 sheets	"Standard: 2,350 sheets (550 sheets per tray + 150 ADF); Max: 5,350 sheets	Standard: 2,350 sheets (550 sheets per tray + 150 ADF); Max: 5,350 sheets
LCD display	22.7cm colour touch-screen	22.7cm colour touch-screen	22.7cm colour touch-screen	22.7cm colour touch-screen
Power consumption Operating / Ready / Sleep / Power Off	160 Watt (standalone copying, ISO/IEC 24712 pattern), 1.1 Watt (sleep mode), 76 Watt (Ready), 0.1 Watt (Power off), TEC 0.34 kWh/week	160 Watt (standalone copying, ISO/IEC 24712 pattern), 1.1 Watt (sleep mode), 76 Watt (Ready), 0.1 Watt (Power off), TEC 0.34 kWh/week	170 Watt (standalone copying, ISO/IEC 24712 pattern), 1.1 Watt (sleep mode), 76 Watt (Ready), 0.1 Watt (Power off), TEC 0.4 kWh/week	170 Watt (standalone copying, ISO/IEC 24712 pattern), 1.1 Watt (sleep mode), 76 Watt (Ready), 0.1 Watt (Power off), TEC 0.4 kWh/week
Dimensions (W x D x H)	674 x 757 x 1,243 mm	674 x 757 x 1,243 mm	674 x 757 x 1,243 mm	674 x 757 x 1,243 mm
Weight	177.1 kg	177.1 kg	177.1 kg	177.1 kg

*Fax is optional at an additional cost.

A3+ RIPS		A4 RIPS	
WF-C878RDTWF	WF-C879RDTWF	WF-C529RDTW	WF-C579RDTWF
SRA3, multifunction up to 4-in-1 device	SRA3, multifunction up to 4-in-1 device	A4 single function	A4 multifunction 4-in-1
5.5 sec Mono / Colour	5.5 sec Mono / Colour	4.8 sec Mono / 5.3 sec Colour	4.8 sec Mono / 5.3 sec Colour
25 ppm Mono / 24 ppm Colour	26 ppm Mono / 25 ppm Colour	24 ppm Mono / Colour	24 ppm Mono / Colour
Up to 4800 x 1200 dpi	Up to 4800 x 1200 dpi	Up to 4800 x 1200 dpi	Up to 4800 x 1200 dpi
Yes	Yes	Yes	Yes
Yes (PDF / TIFF / JPEG)	Yes (PDF / TIFF / JPEG)	-	Yes (PDF / TIFF / JPEG)
25 ipm Mono (simplex) 45 ipm Colour (duplex)	50 ipm Mono (simplex) 100 ipm Colour (duplex)	-	30 ipm Mono (simplex) 60 ipm Colour (duplex)
600 x 600 dpi	600 x 600 dpi	-	1200 x 2400 dpi
Scan to Email, Scan to FTP, Scan to Network folders, Scan to USB, Computer (Epson Document Capture Pro), Microsoft SharePoint with Epson Document Capture Pro, USB Memory Device / Card	Scan to Email, Scan to FTP, Scan to Network folders, Scan to USB, Computer (Epson Document Capture Pro), Microsoft SharePoint with Epson Document Capture Pro, USB Memory Device / Card	-	Scan to Email, Scan to FTP, Scan to Network folders, Computer (Epson Document Capture Pro), USB Memory Device / Card
22 ipm Mono / 21 ipm Colour	22 ipm Mono / 21 ipm Colour	-	22 ipm Mono / Colour
25 - 400%	25 - 400%	-	25 - 400%
Up to 600 x 600 dpi (optical) 600 x 1200 dpi (maximum)	Up to 600 x 600 dpi (optical) 600 x 1200 dpi (maximum)	-	Up to 600 x 600 dpi (optical) 600 x 1200 dpi (maximum)
Up to 33.6 Kbps	Up to 33.6 Kbps	-	Up to 33.6 Kbps
6MB / 550 pages	6MB / 550 pages	-	6MB / 550 pages
Epson iPrint, Email Print, Remote Print Driver, Scan-to-Cloud, Apple AirPrint	Epson iPrint, Email Print, Remote Print Driver, Scan-to-Cloud, Apple AirPrint	Epson iPrint, Email Print, Remote Print Driver, Apple AirPrint	Epson iPrint, Email Print, Remote Print Driver, Scan-to-Cloud, Apple AirPrint
Wired Network (10BaseT / 100Base-TX / 1000Base-T), Wireless Network, USB (High Speed USB 2.0 / USB 3.0 / USB 1.1 Type A), WiFi Direct	Wired Network (10BaseT / 100Base-TX / 1000Base-T), Wireless Network, USB (High Speed USB 2.0 / USB 3.0 / USB 1.1 Type A), WiFi Direct	Wired Network (10BaseT / 100Base-TX / 1000Base-T), Wireless Network, USB (USB 2.0), Wi-Fi Direct	Wired Network (10BaseT / 100Base-TX / 1000Base-T), Wireless Network, USB (USB 2.0), Wi-Fi Direct
A3+, A3, A4, A5, A6, B5, C4 (Envelope), C6 (Envelope), No. 10 (Envelope), Letter, 10 x 15 cm, 13 x 18 cm, 20 x 25 cm, Legal, A3, B4, B6, C5 (Envelope), DL (Envelope), HLT, EXE, Tabloid	A3+, A3, A4, A5, A6, B5, C4 (Envelope), C6 (Envelope), No. 10 (Envelope), Letter, Legal, 10 x 15 cm, 13 x 18 cm, 20 x 25 cm, A3, B4, B6, C5 (Envelope), DL (Envelope), HLT, EXE, Tabloid	A4, A5, A6, B5, B6, C4 (Envelope), C6 (Envelope), DL (Envelope), No. 10 (Envelope), Letter, Legal, 9 x 13 cm, 10 x 15 cm, 13 x 18 cm, 16:9, HLT, EXE, User defined	A4, A5, A6, B5, B6, C4 (Envelope), C6 (Envelope), DL (Envelope), No. 10 (Envelope), Letter, Legal, 9 x 13 cm, 10 x 15 cm, 13 x 18 cm, 16:9, HLT, EXE, User defined
Front: 250 sheets Rear: 85 sheets Option: 500 sheets x3	Front: 250 sheets Rear: 150 sheets Option: 500 sheets x3	Standard: 830 sheets Max: 1,330 sheets	Standard: 830 sheets Max: 1,330 sheets
12.7 cm colour touch-screen	12.7 cm colour touch-screen	6.1 cm colour LCD	10.9 cm colour touch-screen
42 Watt (standalone copying, ISO/IEC 24712 pattern), TEC 0.21 kWh/week	54 Watt (standalone copying, ISO/IEC 24712 pattern), TEC 0.27 kWh/week	1.2 Watt (sleep mode), 24 Watt (Printing), 8 Watt (Ready), 0.2 Watt (Power off), TEC 0.18 kWh/week	29 Watt (standalone copying, ISO/IEC 24712 pattern), 1.3 Watt (sleep mode), 14 Watt (Ready), 0.2 Watt (Power off), TEC 0.19 kWh/week
621 x 652 x 1107 mm	621 x 751 x 1177 mm	425 x 535 x 513 mm	425 x 535 x 513 mm
125.1 kg	141 kg	22.1 kg	25.8 kg

	A4 Colour		A4 Mono	
Model	WF-C5290DW	WF-C5790DWF	WF-M5299DW	WF-M5799DWF
Functions	A4 single function	A4 multifunction 4-in-1	A4 single function	A4 multifunction 4-in-1
First page out print	4.8 sec Mono / 5.3 sec Colour	4.8 sec Mono / 5.3 sec Colour	4.8 sec Mono	4.8 sec Mono
Print speed (ISO)	24 ppm Mono / Colour	24 ppm Mono / Colour	24 ppm Mono	24 ppm Mono
Print resolution	Up to 4800 x 1200 dpi	Up to 4800 x 1200 dpi	Up to 1200 x 2400 dpi	Up to 1200 x 2400 dpi
PCL & PostScript compatible	Yes	Yes	Yes	Yes
Print from USB	Yes (PDF / TIFF / JPEG)	Yes (PDF / TIFF / JPEG)	Yes (PDF / TIFF / JPEG)	Yes (PDF / TIFF / JPEG)
Scan speed (ISO)	-	24 ipm Mono / Colour	-	24 ipm Mono (simplex) 24 ipm Colour (duplex)
Scan resolution (Maximum)	-	1200 x 2400 dpi	-	1200 x 2400 dpi
Scan functions	-	Scan to Memory Device, Network Folder / FTP, Email, Computer, Cloud	-	Scan to Email, Scan to FTP, Scan to Network folders, Computer (Epson Document Capture Pro), USB Memory Device / Card
Copy speed (ISO)	-	22 ipm Mono / Colour	-	22 ipm Mono
Zoom ratio	-	25 - 400%	-	25 - 400%, auto fit function
Copy resolution	-	Up to 600 x 1200 dpi	-	Up to 600 x 600 dpi (optical) 600 x 1200 dpi (maximum)
Fax transmission speed	-	Up to 33.6 Kbps	-	Up to 33.6 Kbps
Fax memory	-	6MB / 550 pages	-	6MB / 550 pages
Mobile and cloud printing	Android, iOS, Email Print, Epson iPrint, AirPrint	Android, iOS, Email Print, Epson iPrint, AirPrint	Epson iPrint, Email Print, Remote Print Driver, Apple AirPrint	Epson iPrint, Email Print, Remote Print Driver, Apple AirPrint
Interfaces	Wired Network (10BaseT / 100Base-TX / 1000Base-T), Wireless Network, USB (USB 2.0)	Wired Network (10BaseT / 100Base-TX / 1000Base-T), Wireless Network, USB (USB 2.0)	Wired Network (10BaseT / 100Base-TX / 1000Base-T), Wireless Network, USB (USB 2.0 / USB 1.1 Type A), Wi-Fi Direct, Near Field Communication (NFC)	Wired Network (10BaseT / 100Base-TX / 1000Base-T), Wireless Network, USB (USB 2.0 / USB 1.1 Type A), Wi-Fi Direct, Near Field Communication (NFC)
Plain paper size	A4, A5, A6, B5, Letter, Legal, Envelope #10, DL, C6, C4, Photo 13 x 18 cm, 10 x 15 cm, 16:19 wide, user defined 55 x 127 - 215.9 x 6000 mm	A4, A5, A6, B5, Letter, Legal, Envelope #10, DL, C6, C4, Photo 13x18cm, 10x15cm, 16:19 wide, user defined 55x127 - 215.9x6000mm	A4, A5, A6, B5, Letter, Legal, Envelope #10, DL, C6, C4, Photo 9 x 13 cm, 13 x 18 cm, 10 x 15 cm, 20 x 25 cm, 16:19 wide, user defined 64 x 127 - 215.9 x 6000 mm	A4, A5, A6, B5, Letter, Legal, Envelope #10, DL, C6, C4, Photo 13 x 18 cm, 10 x 15 cm, 16:19 wide, user defined 55 x 127 - 215.9 x 6000 mm
Paper capacity	Standard: 250 sheets (80 gsm), Optional: 500 sheets (80 gsm), Rear: ASF 80 sheets (80 gsm)	Standard: 250 sheets (80gsm), Optional: 500 sheets (80gsm), Rear: ASF 80 sheets (80gsm)	Standard: 330 sheets Max: 1,330 sheets (250 sheet cassette x1 / 80 sheets MP tray / 500 sheets x2)	Standard: 330 sheets Max: 1,330 sheets (250 sheet cassette x1 / 80 sheets MP tray / 500 sheets x2)
LCD display	6.1 cm + hard key	10.9 cm colour touch-screen	6.1 cm colour LCD	10.9 cm colour touch-screen
Power consumption Operating / Ready / Sleep / Power Off	22 Watt (Printing), 7 Watt (Ready), 1.2 Watt (sleep mode), 0.2 Watt (Power off), TEC 0.17 kWh/week	25 Watt (standalone copying, ISO/IEC 24712 pattern), 1.5 Watt (sleep mode), 12 Watt (Ready), 0.2 Watt (Power off), TEC 0.21 kWh/week	1.2 Watt (sleep mode), 23 Watt (Printing), 8 Watt (Ready), 0.2 Watt (Power off), TEC 0.17 kWh/week	23 Watt (standalone copying, ISO/IEC 24712 pattern), 1.4 Watt (sleep mode), 10 Watt (Ready), 0.2 Watt (Power off), TEC 0.20 kWh/week
Dimensions (W x D x H)	425 x 535 x 357 mm	425 x 535 x 357 mm	425 x 535 x 357 mm	425 x 535 x 357 mm
Weight	15.3 kg	18.7 kg	14.9 kg	18.3 kg

A4 EcoTank Colour	A4 EcoTank Mono	
L6580	M1180	M3180
A4 multifunction 4-in-1	A4 single function	A4 multifunction 4-in-1
5.5 seconds Mono / 6 seconds Colour	6 sec Mono	6 sec Mono
25 ppm Mono / Colour	20 ppm Mono	20 ppm Mono
4,800 x 2,400 dpi	Up to 1200 x 2400 dpi	Up to 1200 x 2400 dpi
Yes	Yes (PCL only)	Yes (PCL only)
Yes	Yes (PDF / TIFF / JPEG)	Yes (PDF / TIFF / JPEG)
A4 Simplex 27.5ipm BW/9ipm Colour A4 Duplex 11ipm BW/6 ipm Colour	-	7 ipm Mono / 7 ipm Colour
1200 x 2400 dpi	-	1200 x 2400 dpi
Scan to Email, Scan to Cloud, Scan to FTP, Scan to Network folders, Scan to USB Memory Device, Scan to Computer (Scan Smart)	-	Scan to Cloud with Epson Connect
Up to 22.5 ipm simplex Up to 19 ipm Duplex	-	Up to 17 ipm Mono
25%-400%	-	25 - 400%
600 x 600	-	Up to 600 x 600 dpi
Up to 33.6kbps / Approx. 3 sec / page	-	Up to 33.6 Kbps
Up to 550 pages / 6MB (ITU-T No. 1 chart)	-	Up to 180 pages
Epson Connect® (iPrint, Email Print, Remote Print Driver, Scan-to-Cloud), Apple AirPrint	-	Epson iPrint
Wired Network, Wireless Network, USB, Wi-Fi Direct	Wired Network (10BaseT / 100Base-TX), USB (High Speed USB 2.0), Wi-Fi Direct	Wired Network (10BaseT / 100Base-TX), USB (High Speed USB 2.0), Wi-Fi Direct
A4, A5, A6, B6, B5, No. 10 (Envelope), DL (Envelope), C6 (Envelope), C4 (Envelope), Letter, Legal	A4, Legal	A4, Legal
Standard: 550 sheets (2 x 250 sheets std paper trays + 50 sheets rear multi purpose tray)	Standard: 250 sheets Max: 251 sheets	Standard: 250 sheets Max: 251 sheets
10.9 cm colour touchscreen	-	6.1 cm
19 Watt (standalone copying, ISO/IEC 24712 pattern), 0.8 Watt (sleep mode), 10 Watt (Ready), 0.2 Watt (Power off), TEC 0.14 kWh/week	0.8 Watt (sleep mode), 14 Watt (Printing), 3.4 Watt (Ready), 0.2 Watt (Power off), TEC 0.13 kWh/week	12 Watt (standalone copying, ISO/IEC 24712 pattern), 1 Watt (sleep mode), 5.7 Watt (Ready), 0.2 Watt (Power off), TEC 0.18 kWh/week
425 x 500 x 350 mm	375 x 347 x 302 mm	375 x 347 x 346 mm
17.8 kg	6.2 kg	7.2 kg

1 Based on Epson calculations, Epson business inkjet time-saving calculated by comparison to business laser devices' average lowest "Print/Copy time" ("from Previous Job", "from Ready State" or "from Sleep State") as reported by ENERGY STAR, added to the time taken to print at maximum speed the remaining pages in an average sized office print job and multiplied by the average number of print jobs per year, according to Keypoint Intelligence. Laser printer models identified using IDC, Quarterly Hardcopy Peripherals Tracker, Q3 2016 to 2020 Q2 shipments, published Q2 2020

2 Based on Epson calculations, the Epson WorkForce Pro WF-C8190DW uses 83% less energy than the HP Color LaserJet Enterprise M750dn, the highest-selling model in the A3 colour single-function 21-30ppm printer segment (IDC, Quarterly Hardcopy Peripherals Tracker, Q4 2015 to Q3 2019 shipments, published Q2 2020). Methodology based on 'Typical Energy Consumption', defined under and/or simulated with reference to the ENERGY STAR test procedure and presented in kWh per year. CO2 saving calculated as being proportional to energy saving, based on a per-territory average generation of kg CO2 per kWh electricity used.

3 Storage space comparison based on Epson calculations of storage space requirements for packaged consumables sufficient to print 6,000 pages on 12 SFP and MFP (3-in-1) printers selected from among the top-selling 50% of A4 monochrome laser printers (below-20ppm class) listed in IDC Worldwide Quarterly Hardcopy Peripherals Tracker 2019Q2 data FY17 results. Average toner package unit volumes and yields for each model were calculated by Epson using toner package dimensions and yields published by the manufacturer for each model (as of August 2019). Actual size and number of toner cartridges required varies by laser printer model. EcoTank consumables quoted yields are simulated figures calculated by Epson based on ISO/IEC24711 methodology using ISO/IEC19752 test pat.

4 A comparison of the HP Colour LaserJet Pro M477dw and the WF-C579R based on manufacturer's published ink yield data

5 Approx. based on internal testing; may vary depending on the number of copies selected, the output environment, as well as the settings for size, orientation, position of paper.

6 Approx. page yield. Actual yield will vary depending on images printed and usage conditions. For more information visit www.epson.eu/pageyield

7 Determined in accordance with ISO/IEC 24734 showing the average of ESAT from the Office Category Test for default A4 simplex and duplex. For more information, please visit www.epson.eu/testing

8 First page out time of 4.8 secs black / 5.3 secs colour from ready mode.

9 AirPrint-enabled printers work with iPhone 4s and later, iPad 2 and later, all models of iPad Air and iPad mini, and iPod touch 5th generation with the latest version of iOS, and Mac with the latest version of OS X.

For further information please contact your local Epson office or visit www.epson.co.za

Algeria (+2213) 770 938 617 **Austria** 01 253 49 78 333 **Belgium** +32 (0)2 792 04 47 **Czech** +420 246 037 281 **Denmark** 44 50 85 85 **East Africa** (+254) 734 354 075
Finland 0201 552 091 **France** 09 74 75 04 04 (Cost of local call, operator charges may apply) **Germany** +49 (0) 2159/92 79 500 **Greece** (0030) 211 198 62 12
Hungary 06800 147 83 **Ireland** 01 436 7742 **Israel** (+972)-3-5751833 **Italy** 02-660321 10 (0,12 €/min) **Luxembourg** +352 27860692 **Middle East** +9714 2677638
Morocco (+212) 661 31 11 18 **Netherlands** +31 (0)20 708 5099 **Norway** +47 67 11 37 00 **Poland** +48 22 295 37 25 (0,16 zł/min) **Portugal** 707 222 111
Romania 0040 214025024 **Russia** (095) 777-03-55 **Slovakia** +421 232 786 682 **Southern Africa** +27 (0) 10 109 5320 **Spain** 93 582 15 00 **Sweden** +46 8 5051 3701
(Mobilsamtal – 0,99 kr/min, Lokala samtal – 0,30 kr/min, Utlandssamtal – 0,89 kr/min) **Switzerland** 022 592 7923 **Tunisia** (+216) 9833 3571 **Turkey** (0212) 3360303
United Kingdom 0871 42 37766 (+10p per minute plus network extras) **West Africa** (+234)8020727843

Trademarks and registered trademarks are the property of Seiko Epson Corporation or their respective owners.
Product information is subject to change without prior notice.

EPSON®